

ESS-2002

The NoiseKen's ESS-2002 is a further development from an award winning* ESD simulator ESS-2001. A completely new design has made the product easier to use, more reliable and affordable. The major benefits provided by our best selling high performance ESD simulator ESS-2000 are not sacrificed. The most significant addition is RS232 interface. Remote control Windows software package is optionally available.

* Evaluation Engineering 2001 Readers' Choice Award

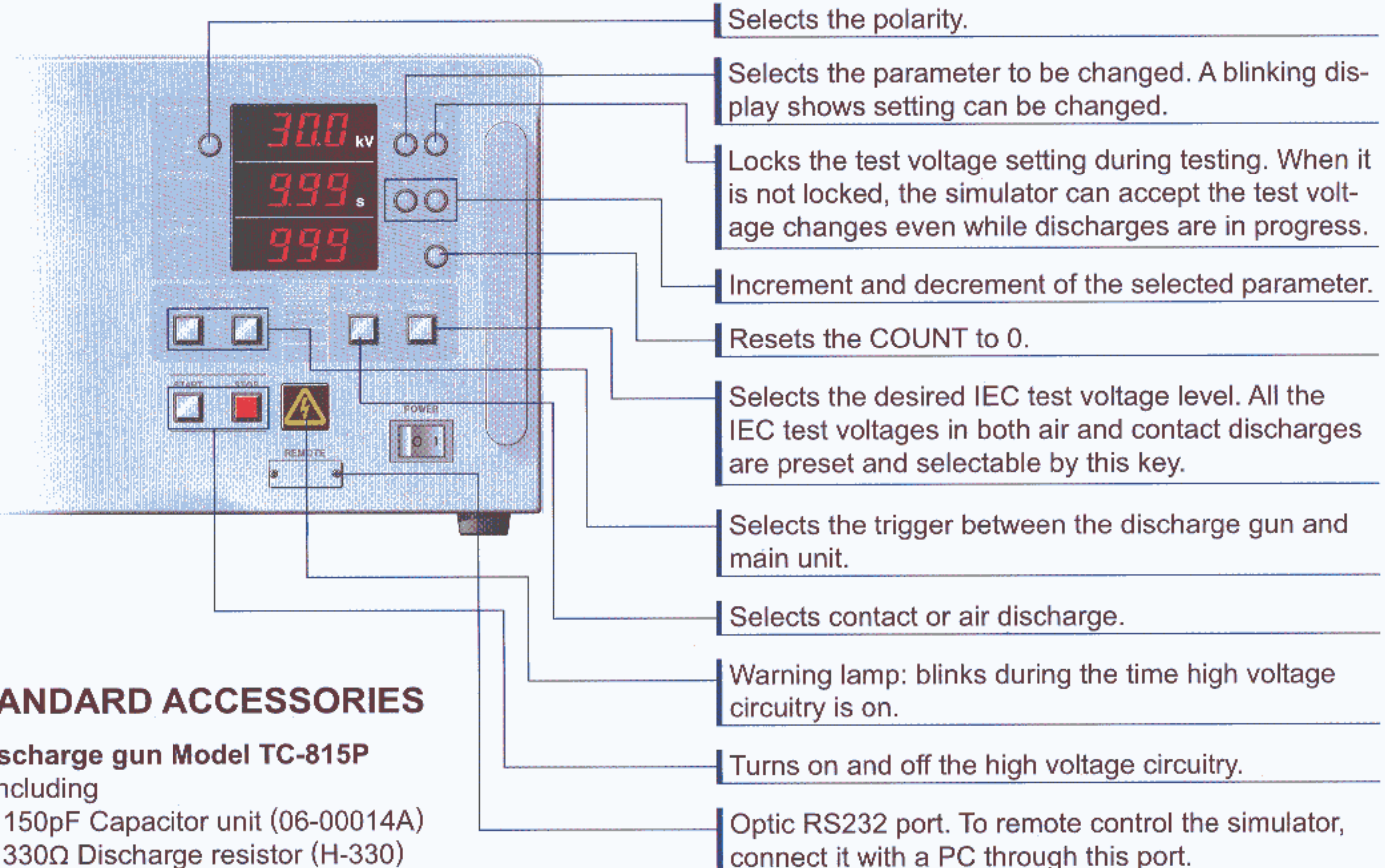
FEATURES

- Meets and far exceeds the requirements in EN/IEC61000-4-2
- Up to 30kV output in both contact and air discharges
- A lightweight discharge gun
- Easily changeable capacitor and resistor units
- A wide range of options
- CE marked
- Self-explanatory control panel
- Optional remote control Windows software ESS-2000-PC offers more comprehensive control than local operation.



(Gun stand in the photo is an optional accessory.)

CONTROL PANEL



STANDARD ACCESSORIES

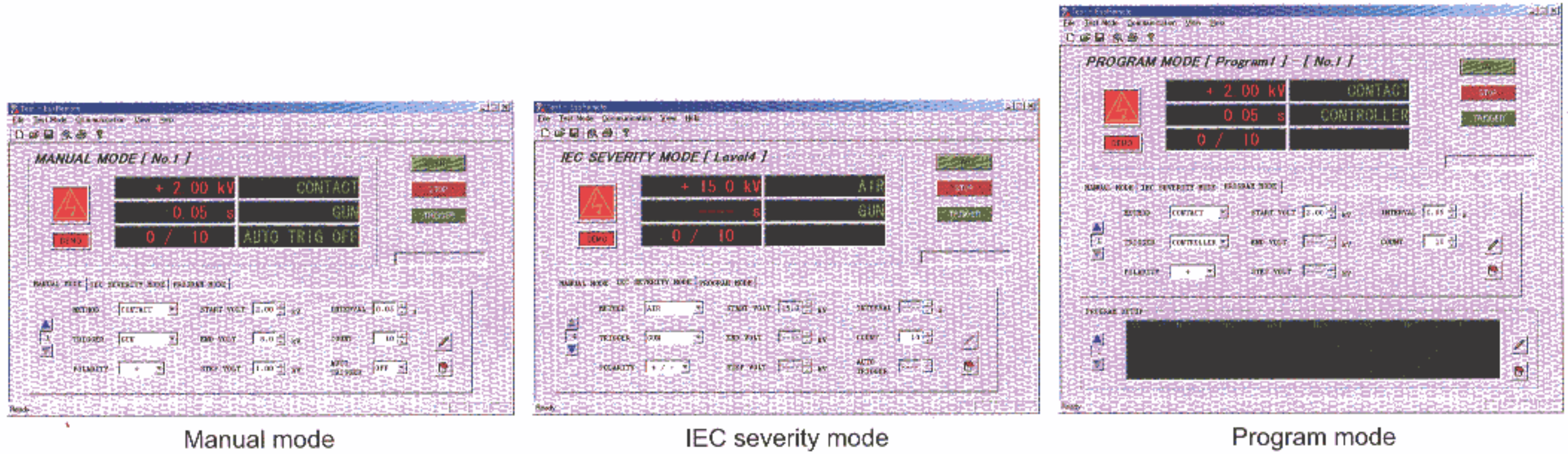
- Discharge gun Model TC-815P
 - Including
 - ◆ 150pF Capacitor unit (06-00014A)
 - ◆ 330Ω Discharge resistor (H-330)
 - ◆ Discharge tip (Model 12-00001A/12-00002A)
 - ◆ Instruction manual for TC-815P
- Instruction manual for ESS-2002
- Accessory bag

ESD Simulator

■ OPTIONS

- Fiber optic RS232 interface Model 07-00017A
- Remote control Windows software ESS-2002-PC Model 14-00030A
Complete, comprehensive ready-made Windows software package to control the ESS-2002 simulator remotely from your PC.

All test parameters in ESD test can be controlled including discharge mode of either air or contact.
Manual mode offers operability as if the operator directly controls the ESS-2002 simulator but with automatic preset voltage ramp.
IEC severity mode offers preprogrammed test setting as per IEC 61000-4-2 standard for instant use.
Program mode offers sequencing of user edited parameter settings.



■ SPECIFICATIONS

Parameters	ESS-2002 specifications
Output voltage	0.20~30.0kV
Polarity	Positive or negative
Charging resistance	10MΩ (53M ohm for combination with TC-815P Discharge Gun)
Discharge mode	Air discharge and Contact discharge
Discharge interval	0.05~9.99s
Counter	1~999 discharges
Trigger	Gun and main unit (controller)
External interface	Optic RS232
Power supply	100~240VAC 50/60Hz, <50VA
Operating temperature and humidity	15~35°C, 25-75% (No dewing shall occur)
Dimensions	(W)340×(H)200×(D)300mm (Projection excluded)
Weight	Approx. 7.0kgs.

For other ESD simulator products and optional accessories, refer to 12 pages ESS series brochure.

● Designs and specifications are subject to change without notice.

(株)NOISE TECH.
 서울특별시 영등포구 여의도동 13-19
 (남승빌딩 406호)
 전 화: **783-7816(대)**
 FAX: **783-7 1 7 5**

NOISE LABORATORY CO., LTD.
 1-4-4, Chiyoda, Sagamiara City,
 Kanagawa Pref., 229-0037 Japan
 Tel: +81(0)42-712-2051 Fax: +81(0)42-712-2050
<http://www.noiseken.com/>
 E-mail: sales@noiseken.com